

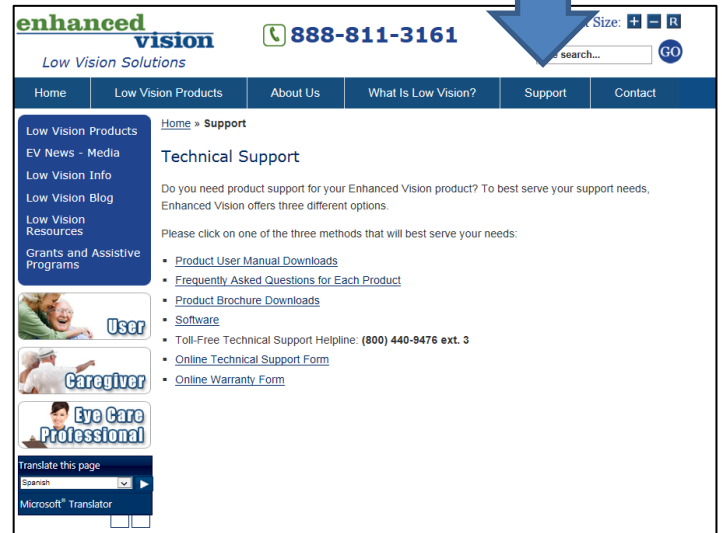
Transformer VGA Offline Firmware Update Instructions

Note: You must use a Windows based PC for the manual update process.

Step 1: Acquire the updater application

Open a web browser and browse to <http://www.enhancedvision.com/>

Then Click "Support" At the top of the page <http://www.enhancedvision.com/support.html>



Once you are on the support page click on "Software"

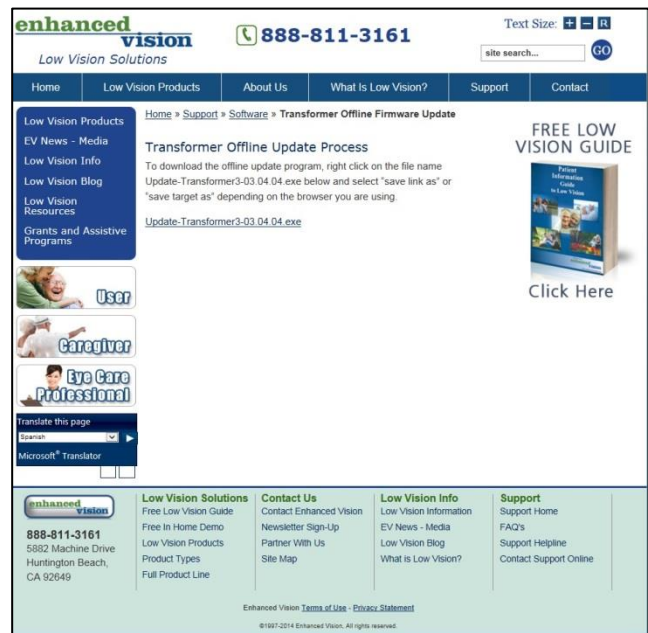
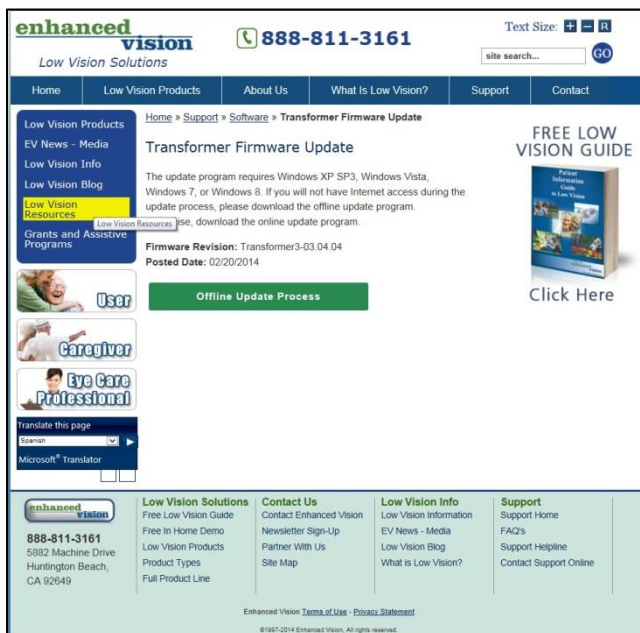
<http://www.enhancedvision.com/support/software.html>

Click on [Firmware Update for Transformer](#)

Click on "Offline Update Process"

<http://www.enhancedvision.com/support/software/transformer-firmware-update.html>

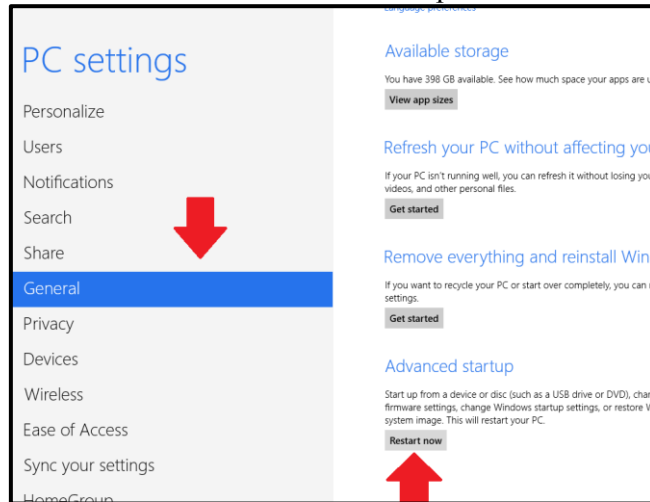
"You will see "Offline Update Instructions". Please read completely before proceeding.



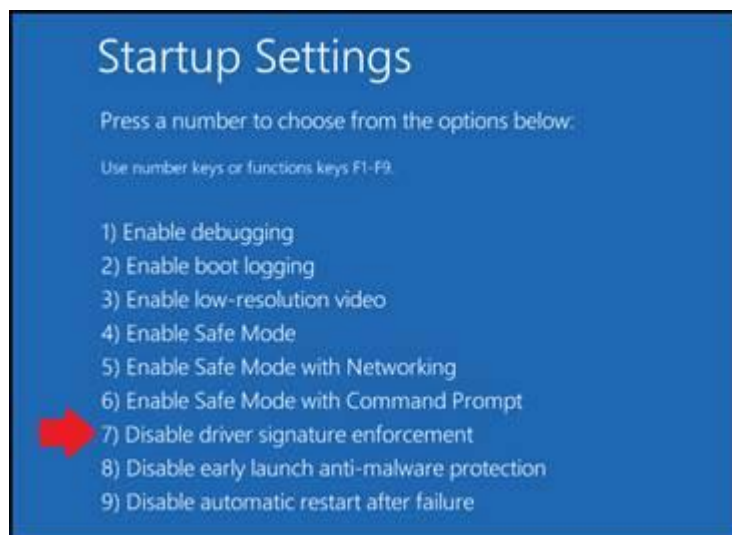
Attention Windows 8 Users

Driver Signature Enforcement must be disabled before you can install the EVDFU utility.

1. While on your desktop press and hold the Windows key on your keyboard and press the letter C to open the Charm menu, then click the gear icon aka Settings.
2. Click Change PC Settings.
3. Choose “General” Tab and scroll to the bottom of these options
You will need to choose “Advanced startup” with the “Restart Now” option.



4. After your PC Reboots you will be prompted with a menu where you need to choose the “Troubleshoot” option.
5. Next choose “Advanced options”.
6. Then choose “Startup Settings” (You will be prompted to restart again).
You will have a list of options but we want to choose “Disable driver signature enforcement”. It should be item #7.

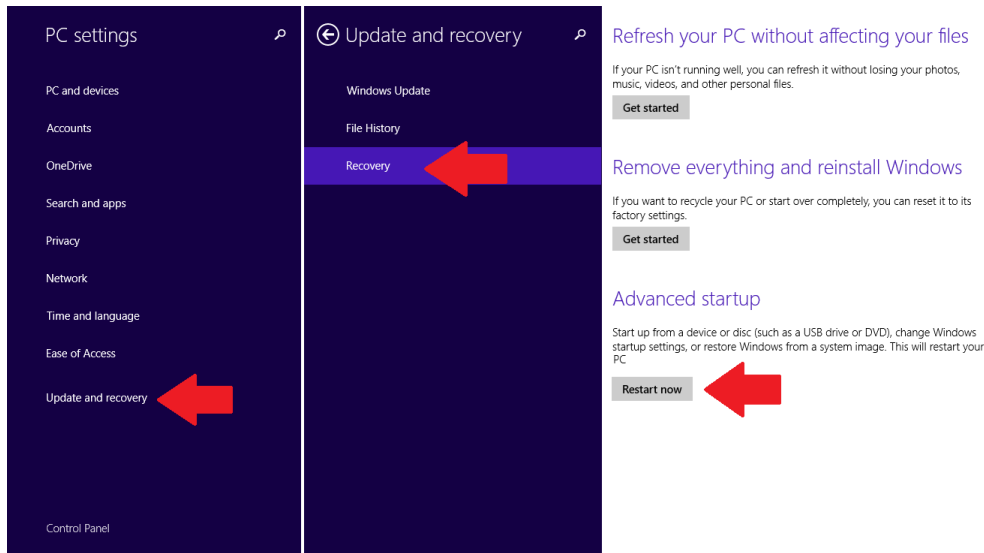


7. After Driver signature enforcement is disabled you should be able to install the EVDFU firmware updater.

Attention Windows 8.1 Users

Driver Signature Enforcement must be disabled before you can install the EVDFU utility.

1. While on your desktop press and hold the Windows key on your keyboard and press the letter C to open the Charm menu, then click the gear icon aka Settings.
2. Click Change PC Settings.
3. Choose “Update & Recovery” Tab and then choose the “Recovery” option.
You will need to choose “Advanced startup” with the “Restart Now” option.



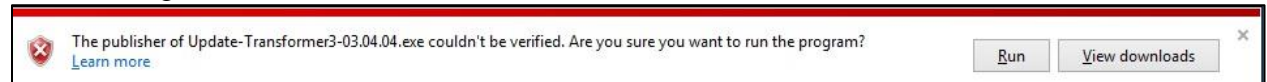
4. After your PC Reboots you will be prompted with a menu where you need to choose the “Troubleshoot” option.
5. Next choose “Advanced options”.
6. Then choose “Startup Settings” (You will be prompted to restart again).
You will have a list of options but we want to choose “Disable driver signature enforcement”. It should be item #7.



7. After Driver signature enforcement is disabled you should be able to install the EVDFU firmware updater.

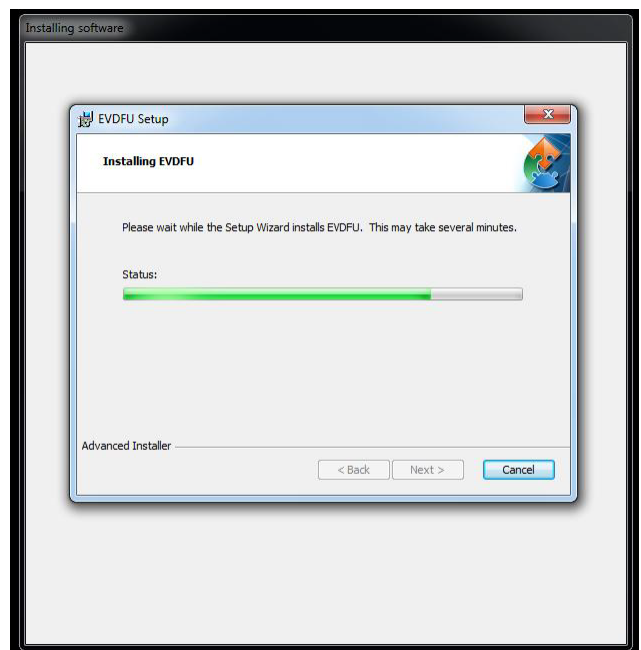
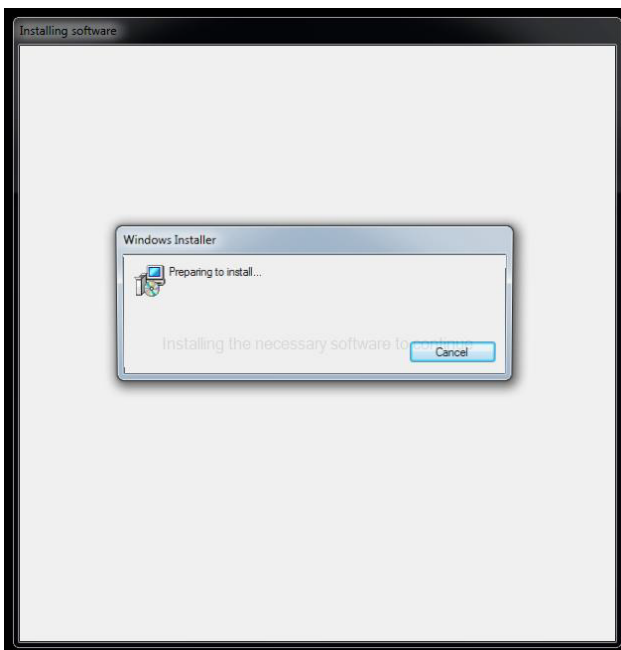
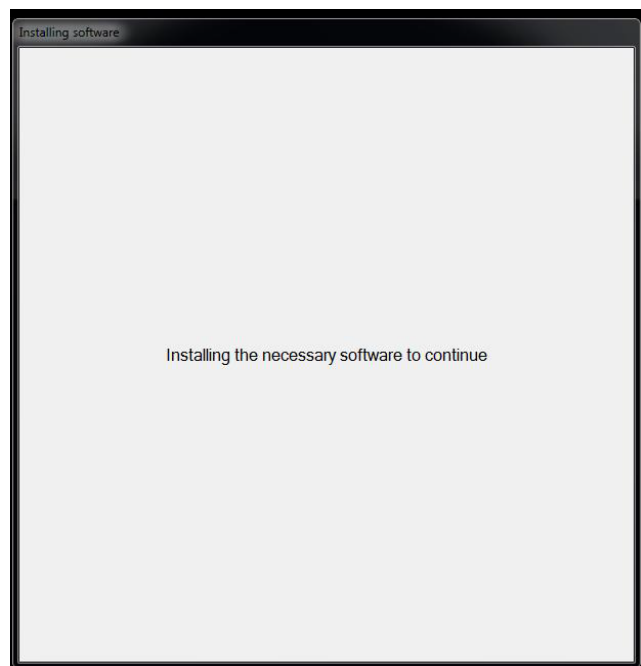
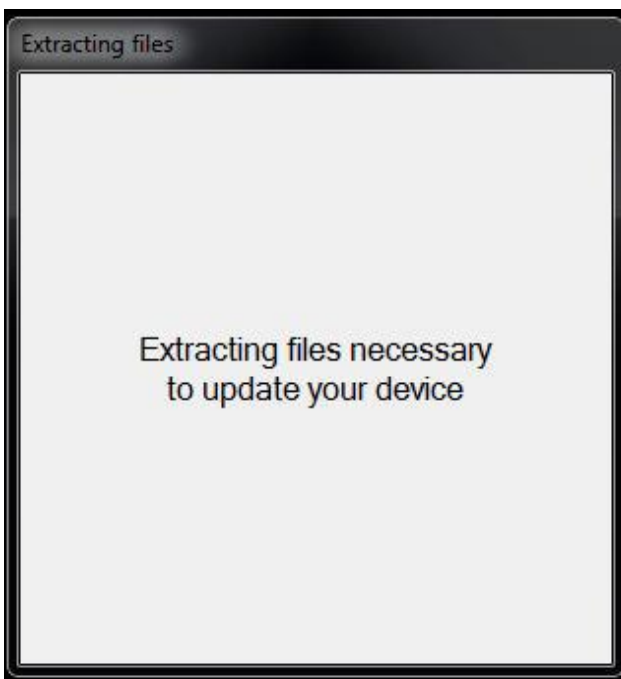


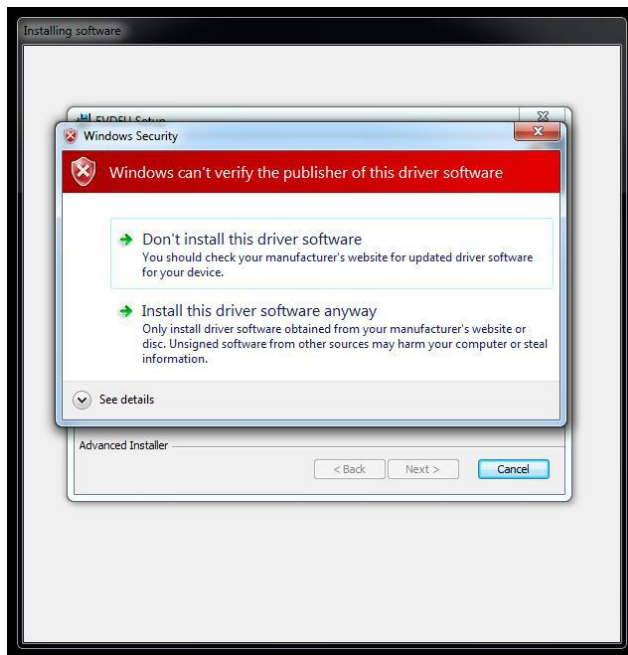
After you select Update Transformer you will be prompted with a “save link as” or “save target as” depending on your web browser. Please save the file to your Desktop. Please note these messages may change but you should see something similar to the following. When the file is finished downloading choose “Run”.



Step 2: Installing Tools

Afterwards all necessary files will be extracted to your desktop to a folder called “EV Updater”. You should see many of the following screens:





If you receive the windows warning, click Install anyway.....

When Installation is complete, the program should automatically open to the screens shown in Step 3.

Step 3: Preparing your PC

- A) Begin by ensuring that the "USB Firmware Updater" Screen is displayed. This is referred to as the EVDFU Tool(Enhanced Vision Device Firmware Updater).
- B) There should be an EVDFU Shortcut on your desktop please run it now.



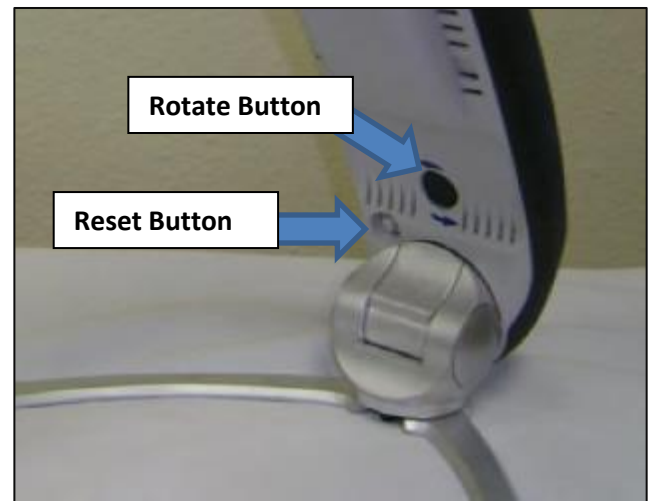
Step 4: Putting your Device in to DFU mode

A: First open up the Transformer Camera Arm. Then hold down the “Rotate” button which should now be visible. (This button is located in the lower middle of the transformer Camera Arm, identified in the picture to the right). While still continuously holding down “Rotate” press the “Reset” Button located near the Rotate Button.

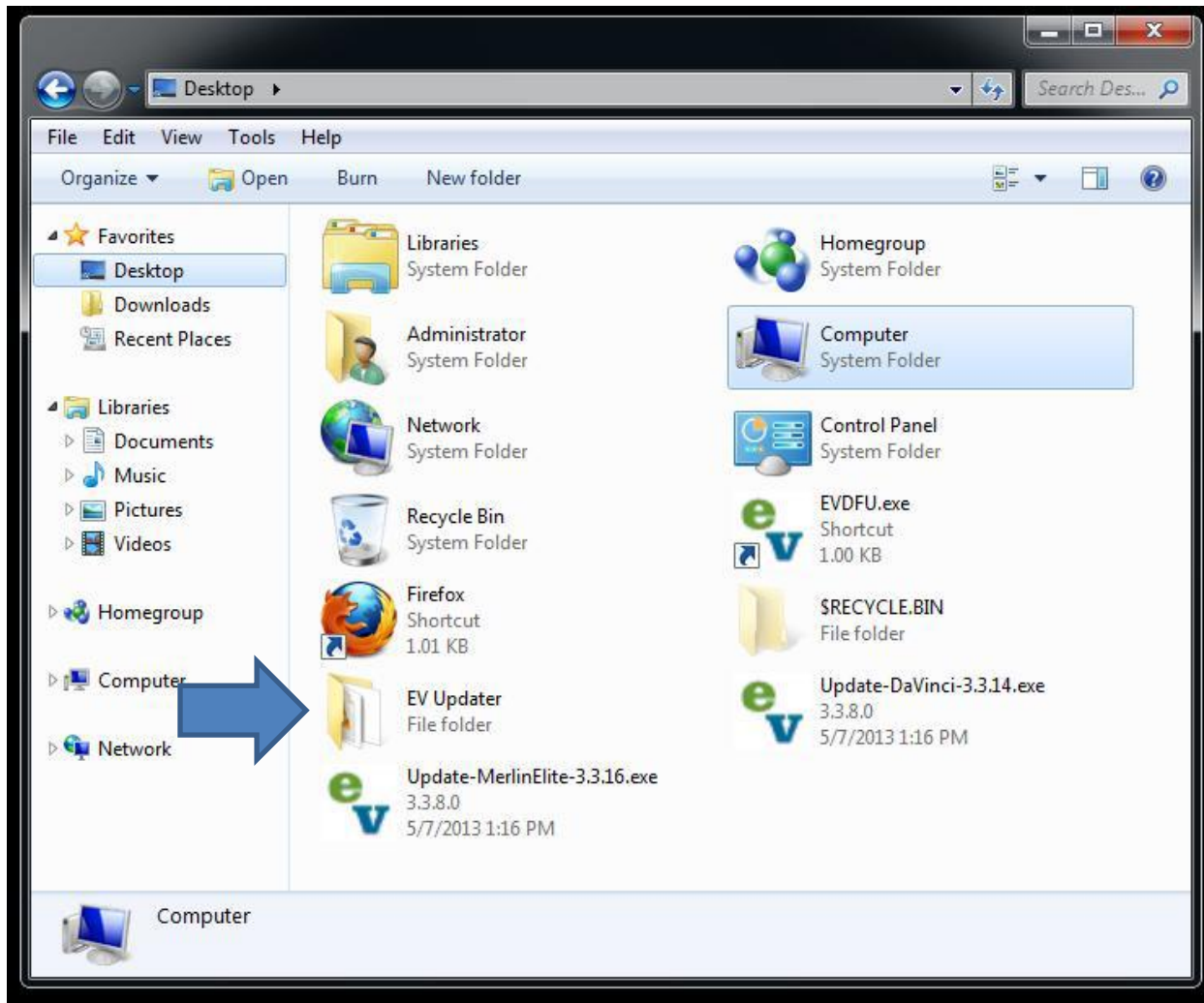
B: The Transformer indicates it is in Firmware Update mode when you see the Green LED Blinking Rapidly.

C: Please repeat the above process if the Green LED is not blinking rapidly.

D: When you are successful the EVDFU tool on your PC will display the screens below. Please choose the “Browse” Option that is indicated.

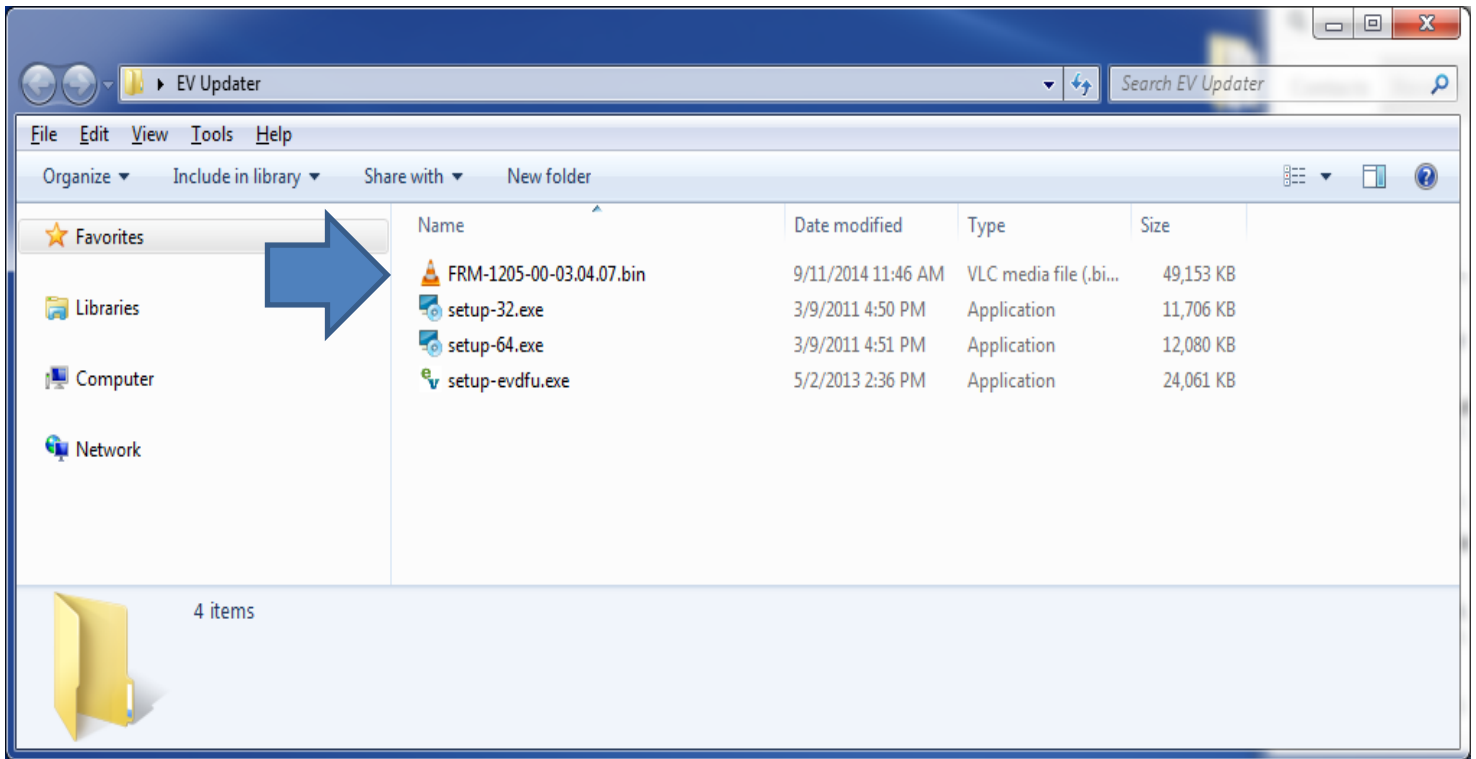


Step 5: Selecting Your Update

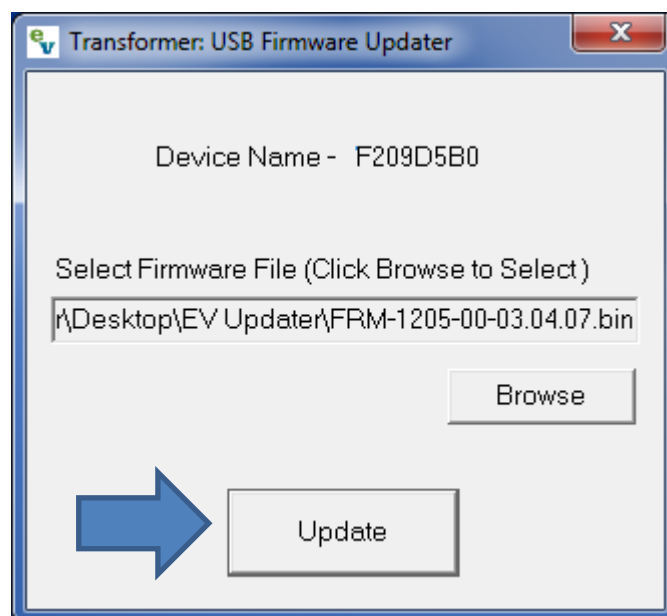


Open the EV Updater File Folder and Continue...

The contents of the EV Updater should be similar to below. Please choose the file marked as FRM-1205-00-03.04.07. When you are finished Click “Open”



When you see the highlighted file in the box below you simply need to click “Update”



Step 6:

You will then see a “Downloading” prompt.

Please do not interrupt the process or disconnect your device until the File Transfer is complete.

A message box indicating that the process is finished will appear. Please do not remove the device from power or USB.

