

enhanced
vision

pebbleTM



Screen Size
4.3" or 3.5"

Users Manual

Congratulations on your purchase of the Pebble from Enhanced Vision. The Pebble is a handheld electronic video magnifier that you can take anywhere. Weighing less than 8 ounces, Pebble features a uniquely-designed folding handle and includes both near-viewing and table reading modes. Small enough to fit in your pocket or purse, the Pebble is the ideal companion to provide magnification, on the go.

With the Pebble, you can easily read bank statements, coupons, prescriptions, restaurant menus, sign checks - anywhere you need portable magnification. The pebble provides hours of low vision enhancement.

Featuring a built-in, LCD screen (3.5" or 4.3"), the Pebble allows you to magnify images up to 10 times. A built in Freeze-Frame feature allows you to capture any still image and adjust magnification. Six different viewing modes allow you to choose alternate color combinations based on your personal preference.

The Pebble includes a convenient carrying case, a built-in wriststrap, rechargeable batteries and has an integrated battery charger. Pebble comes with a 2 year warranty.

FCC COMPLIANCE NOTICE

This device complies with Part 15 of the FCC Rules. Operation is subject to the following two conditions: (1) This device may not cause harmful interference, and (2) this device must accept any interference received, including interference that may cause undesired operation.

This equipment has been tested and found to comply with the limits for a Class B digital device, pursuant to Part 15 of the FCC Rules. These limits are designed to provide reasonable protection against harmful interference in a residential installation. This equipment generates, uses, and can radiate radio frequency energy and, if not installed and used in accordance with the instructions, may cause harmful interference to radio communications. However, there is no guarantee that interference will not occur in a particular installation. If this equipment does cause harmful interference to radio or television reception, which can be determined by turning the equipment off and on, the user is encouraged to try to correct the interference by one or more of the following measures:

- Reorient or relocate the receiving antenna.
- Increase the separation between the equipment and receiver.
- Connect the equipment into an outlet on a circuit different from that to which the receiver is connected.
- Consult the dealer or an experienced radio/TV technician for help.

Unauthorized changes or modification to this system can void the user's authority to operate this equipment.

If your Low Vision device has an option to connect to a TV, it must be used with shielded interface cables in order to meet FCC emissions limits for Class B digital devices. It is the responsibility of the user to use the shielded interface cables supplied with the equipment.

Chapter 1: Safety Precautions

General guidelines	6
Transportation	7
Care & Maintenance	7

Chapter 2: Package Contents & Controls

Package Contents & Controls	8-9
Accessories	8-9

Chapter 3: Using the Pebble

Power Options	10
Connecting the Power supply	10
Turning the Power On/Off	11
Adjusting the image size	11
Power Supply	12
Viewing modes	13
Freezing an image	14
Adjusting LCD Brightness	15
Adjusting the Handle	16
Reading & Hand-Held Position	17-18

Chapter 4: Charging & Using Batteries

Using Rechargeable Batteries	19
Opening & Closing the Battery Compartment. . .	20
Battery Charging Procedure	21
Battery Charger Status Indicators	21

Chapter 5: Tips for using the Pebble

Attaching the wrist Strap.....	22
Using the Carrying Case.....	22

Chapter 6: Advanced Features

Turning LED On/Off	23
Static/Dynamic LED modes.....	24

Chapter 7: Troubleshooting

Troubleshooting	25-26
-----------------------	-------

Chapter 8: Specifications

Specifications	27-28
----------------------	-------

Chapter 9: Warranty Information

Warranty Information	29-30
----------------------------	-------

Chapter 10: Other Enhanced Vision Products

Other Enhanced Vision Products	31-34
--------------------------------------	-------

SAFETY PRECAUTIONS

For your safety and to obtain the most benefit and life from the Pebble, please read these important safety precautions carefully.

General guidelines for use:

- ▶ Follow all warnings, cautions, and instructions marked on the product.
- ▶ Do NOT attempt charging alkaline batteries with the Pebble. Doing so will void your warranty and could cause damage to the product and/or pose personal safety risks.
- ▶ Use care when transporting the Pebble. While in use, securely attach and use the wrist strap to avoid damage to the Pebble caused by accidental droppage.
- ▶ Use care when using the Pebble outdoors – it should NOT be exposed to extreme or rapid changes in temperature or humidity.
- ▶ Do not place the Pebble near a radiator, heater or areas exposed to long hours of direct sunlight.
- ▶ Prevent the risk of electrical shock by NOT attempting to disassemble the unit. Please refer all service to an authorized repair facility.
- ▶ Do not use the Pebble in, near or around water. The Pebble is not designed to offer protection against contact with liquids of any kind.
- ▶ Do not use the Pebble during an electrical storm, lightning, or other severe weather.
- ▶ Do not use the Pebble near open flames, flammable materials or liquids.

Transportation:

- ▶ Pebble comes with a convenient carrying case for transport. To prevent the unit from being accidentally dropped and damaged, always return the Pebble to the carrying case while not in use.
- ▶ This product is intended to be used as a portable device. Please use care when connecting/disconnecting cables and accessories.

Care & Maintenance:

- ▶ Always turn the power OFF on the Pebble when the system is not in use.
- ▶ To prolong battery life, remove the battery from the Pebble if the system is not being used for one week or more.
- ▶ If needed, clean the surface of the Pebble with a soft damp cloth or an electrostatic dusting wipe. DO NOT use liquid cleaners on the plastic surfaces. No additional methods of sterilization or cleaning are recommended or required.

Susceptibility to Interference:

There may be temporary performance degradation of the Pebble when subjected to a strong magnetic and/or radio-frequency field, electrostatic discharge or transient electrical noise. An electrostatic discharge (caused by static electricity) may cause image distortion. If this happens, switch the unit off and try moving the unit to a different location.

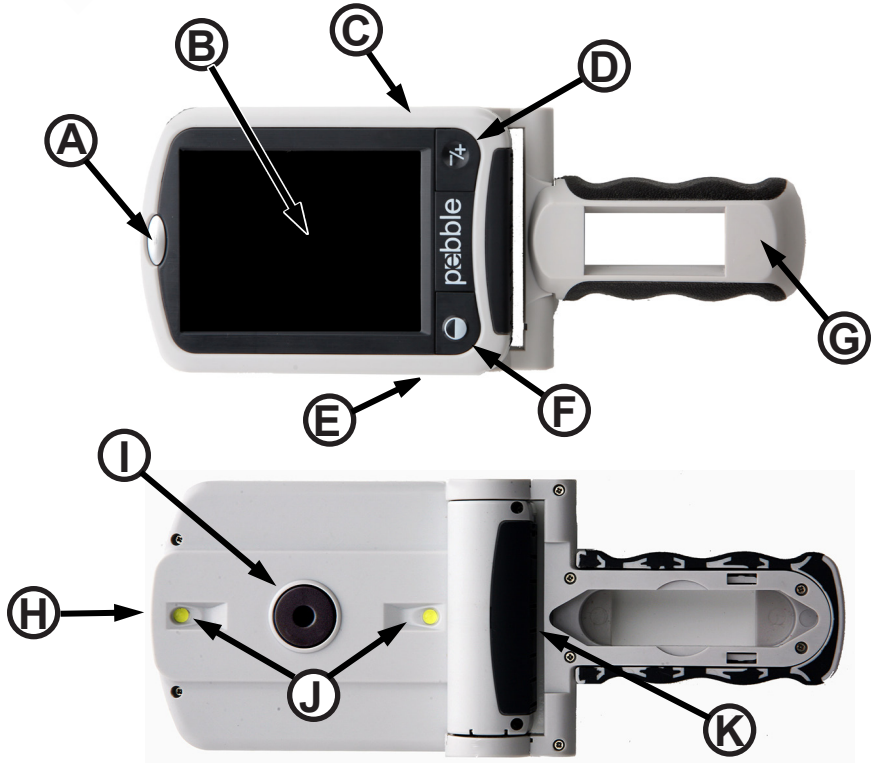
PACKAGE CONTENTS & CONTROLS

Please refer to the illustrations on the next page to identify the package contents and controls of your Pebble. In addition to this users guide, you'll find the following items inside the box:

- 1. Pebble**
- 2. Wrist Strap (Lanyard)**
- 3. Carrying Case with belt clip**
- 4. AC adaptor power supply (*style may vary*)**
- 5. Rechargeable NiMH Batteries**
(included inside Pebble)
- 6. Lens Cloth**

Please note the locations of the following controls on your Pebble:

- A. Freeze-Frame (Snapshot) Button**
- B. LCD Screen**
- C. LCD Brightness Switch (recessed)**
- D. Size Button (Magnification)**
- E. Power Supply Input Port (DC IN)**
- F. Viewing Mode Button**
- G. Adjustable Handle**
- H. Power Button (On/Off)**
- I. Camera Lens**
- J. LED Lighting**
- K. Battery Compartment (Integrated Charger)**



Power Options

Your Pebble can be powered using:

- ▶ The included AC adaptor/power supply
- ▶ Rechargeable batteries (included)

When using the Pebble for the first time, please power the unit using the included AC Adaptor/power supply. This will ensure that the rechargeable batteries can fully charge, even while the Pebble is in operation. *Although regular Alkaline batteries may work to power the Pebble, the battery life may vary and will be reduced significantly compared to using rechargeable batteries.*

Connecting the AC adaptor/power supply

Use the following procedure to connect the Pebble to the AC adaptor/power supply:

1) Connect the tip of the included AC adaptor/power supply to the DC IN port on the bottom edge of the Pebble (See Figure 1).

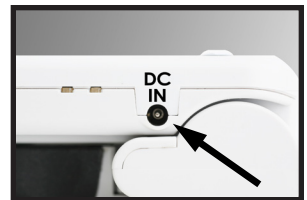


Figure 1

2) Plug in the remaining end of the AC adaptor/power supply to an available AC wall outlet (mains)

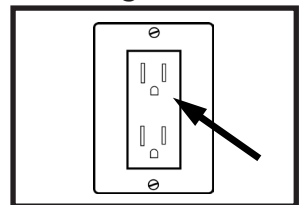


Figure 2

(See Figure 2).

POWER SUPPLY

Included within your Pebble Magnifier box is a main power supply and multiple inserts for the outlets of various countries.

- 1.) To install choose the correct insert for your country (See figure 1).
- 2.) Find the tab that is located at the top of your insert, slide at an angle into the main power supply, and push down until it clicks (See figure 2 & 3).
- 3.) You may now proceed to plug this into an available outlet and begin to charge your Pebble magnifier. To offer additional protection during an electrical storm, a surge protector may also be used and is recommended.



Figure 1



Figure 2



Figure 3

Turning the Power On/Off

Use the following procedure to turn the power of your Pebble On or Off:

- 1) Find the green, recessed POWER button located on the top side edge of your Pebble.



Figure 1

- 2) Press and hold the POWER button to turn the Pebble on. Shortly, an image should appear on the LCD display. To turn off the Pebble, press and hold the POWER button again (Figure 2).



Figure 2

Note: A short, confirmation tone (“beep”) will be heard when the unit is powered On or Off.

Adjusting the Image Size

Use the following procedure to adjust the displayed magnification (size) of the LCD image.

- 1) Find the SIZE button located on the lower right face of your Pebble (See Figure 3).



Figure 3

- 2) Press the SIZE button to change the magnification size on the LCD. Pressing this button will continuously cycle through all 3 magnification sizes (See Figure 4).



Figure 4

Selecting the Viewing mode:

Use the following procedure to select the viewing mode of the image on the LCD display:

1) Find the MODE button located on the face of your Pebble
(See *Figure 1*).



2) Press the MODE button to continuously cycle through the 6 pre-set viewing modes. To change your viewing mode to any of the 28 available follow instructions below.

Figure 1

Changing pre-set viewing modes:

Your Pebble has 4 set viewing modes (full-color, black & white, enhanced positive, & enhanced negative) and 2 that can be changed to any of the 28 available. Use the following procedure to select between the 28 available color modes:

1) Toggle the Pebble with the MODE button (See *Figure 1*) to the color select mode #1 or #2.



Figure 1

2) While holding down the FREEZE button (See *Figure 2*), toggle through the 28 color select modes by pressing either the ZOOM (+/-) or MODE button. Once you identify the desired color select mode, release the FREEZE button. The Pebble will now store this color select mode until changed.



Figure 2

3) Repeat step 2 to change the pre-set color select #2.

Freezing an Image (Snapshot function)

If desired, you can take a temporary snapshot (freeze) an image on the display. You can also adjust the size and color modes after freezing an image. This feature is quite useful for reading price tags, prescriptions or other information that may need to be temporarily captured. Use the following procedure to take a snapshot (freeze) the image on the display:

1) Find the FREEZE button located on the top face of your Pebble (See *Figure 1*).

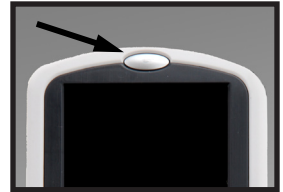


Figure 1

2) Press the FREEZE button to capture the image (See *Figure 2*). Pebble will sound a short confirmation tone (“beep”) when the image is captured. After capturing the image, you can adjust the size or color modes as described previously on pages 11 & 12.



Figure 2

3) Press the FREEZE button again (*Figure 2*) to exit and resume normal operation of your Pebble. Turning off the power of your Pebble will also clear the frozen image (See *Figure 3*).



Figure 3

Adjusting LCD Brightness

Your Pebble is designed to provide the brightest image possible on the LCD display when shipped from the factory. If desired, use the following procedure to manually adjust the brightness of the LCD display:

1) Find the small LCD brightness control slide switch located on the top side of your Pebble (See *Figure 1*).

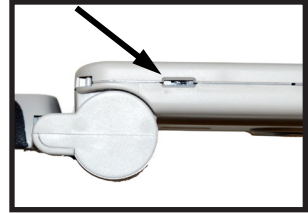


Figure 1

2) Using the tip of a ball-point pen (or other sharp-pointed object), slide the brightness control switch to choose one of the 3 available LCD brightness settings (See *Figure 2*).

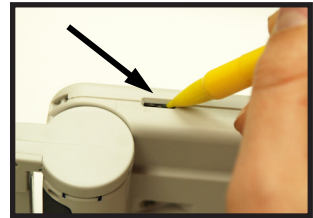


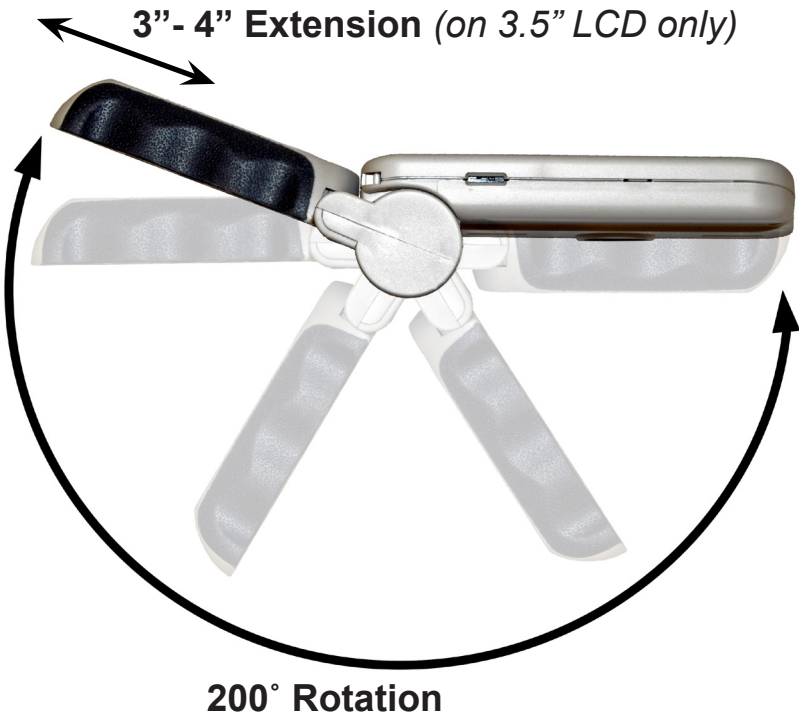
Figure 2

Left = Lowest Brightness
Center = Medium Brightness
Right = Highest Brightness

Note: The Highest LCD brightness setting is the nominal setting and should be used in most cases. Lowering the LCD brightness settings may help to extend the running time of the Pebble.

Adjusting the Handle

The Pebble features a unique, adjustable handle that can both rotate and/or extend, allowing you to easily magnify a wide variety of objects in multiple settings. Refer to the illustration below for more information on how the handle can be positioned according to your needs.



Please refer to the next two pages for more information on how to adjust the handle of your Pebble and specific applications for use.

Depending on your application, use the guidelines listed on the next two pages for more information on adjusting the handle for your particular magnification needs...

Reading Position (fully closed)

Close the handle completely into a folded position. Adjusting the handle in this position is convenient for reading a book, pamphlet or other printed text.

(See Figure 1a & 1b)



Figure 1a



Figure 1b

Hand-Held Position (180° open)

Open and extend the handle as shown below. Adjusting the handle in this position is convenient for magnifying a wide variety of objects.

(See Figures 2a & 2b)



Figure 2a



Figure 2b

Writing Position (200° open)

Open the handle completely until it is fully rotated. Hold the handle flush with your writing surface. The viewing screen will tilt upward leaving enough room to write. (See *Figures 3a & 3b*)



Figure 3a



Figure 3b

Hands-Free/Desktop Position

Open the handle at a slight angle for hands-free or desktop use. Adjusting the handle in this position is convenient when both hands are needed to perform other tasks. (See *Figures 4a, 4b & 4c*)



Figure 4a



Figure 4b



Figure 4c

Using Rechargeable Batteries

Your Pebble includes two, rechargeable Nickel-Metal Hydride (NiMH) batteries that can be continuously charged inside the Pebble, even while the unit is in operation (see page 10). It is recommended to leave the unit connected with the included AC adaptor when the unit is not in use to maintain a continuous charge on the batteries. This way, your Pebble will always be ready for portable use. It is not possible to overcharge the included Nickel-Metal Hydride (NiMH) batteries. Please refer to the instructions on the next few pages for more information on replacing and charging the batteries.

Important Points When Using Battery Power

- ▶ If your Pebble will not be in use for 4 weeks or more, it is recommended that you remove the batteries.
- ▶ The Pebble should ONLY be used with rechargeable batteries.
- ▶ Rechargeable batteries should be rated at 2500mAh or greater.
- ▶ Rechargeable batteries should be fully charged prior to first use.
- ▶ Using new batteries, your Pebble should last up to 1.5 to 2.5 hour battery life depending on screen size (rechargeable / replaceable batteries included). The total usage time will gradually reduce with subsequent charges.
- ▶ It is not recommended to use standard “AA” batteries (or alkaline) inside the Pebble. Standard batteries are not capable of being recharged inside the

Opening & Closing the Battery Compartment

1) Close the handle and locate the battery compartment door (See Figure 1).



Figure 1

2) Using your fingernail or small coin, press down and slide the latch downward to the “UNLOCK” position as shown.



Figure 2

(See Figures 1 & 2)

3) Lift the battery cover to access the batteries. Remove (or install) 2 rechargeable NiMH batteries. *Pay close attention to the battery polarity markings found on the inside of the battery compartment.***

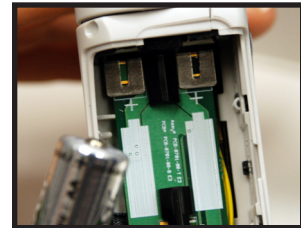


Figure 3

(See Figure 3)

4) To replace the battery cover, align the cover as shown over the battery compartment. Using your fingernail or small coin, press down and slide the latch upward to the “LOCK” position as shown.



Figure 4

(See Figures 1 & 4)

*****Please note that each battery is inserted with the polarity facing in the same direction.***

Battery Charging Procedure

To charge the Nickel-Metal Hydride (NiMH) batteries inside your Pebble, simply connect the included *AC adaptor/power supply as described on the bottom of page 10. You can continue to use the Pebble even while the batteries are being charged.

Built-In Battery Charger Status Indicators

Your Pebble has two small indicator lights (LEDs) located on the side of the unit. The LEDs indicate the current power state and charge status of the batteries (see *Figure 1*).

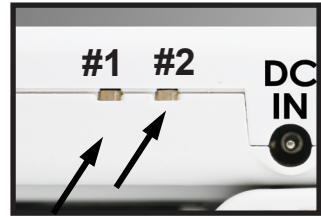


Figure 1

Refer to the table below for more information regarding the meaning of each LED indicator light:

LED #1 Color	LED #2 Color	Meaning:
<i>Green</i>	<i>Off</i>	Battery OK & DC Present
<i>Green</i>	<i>Amber</i>	Battery charge near completion
<i>Green</i>	<i>Red</i>	Batteries charging
<i>Off</i>	<i>Off</i>	Battery or DC power only
<i>Amber</i>	<i>Off</i>	Faulty Battery charge

Note: When your Pebble batteries are getting low, Pebble will begin to sound a series of audible short beeps. The beeping rate will speed up every minute to a rate of once every 3 seconds. When this occurs, please recharge or replace the batteries immediately.

****The user assumes full responsibility for charging batteries in any other charger different than Pebble's built-in charger.***

Attaching the Wrist Strap (Lanyard)

For added security, your Pebble includes a Wrist Strap (Lanyard) that can be attached, if desired. When using the Pebble in a portable setting, the included wrist strap will help to prevent your Pebble from accidentally being dropped on the floor or other hard surface. Use the following procedure to attach the wrist strap (lanyard):

1) Locate the wrist strap (lanyard) included inside the package of your Pebble (see *Figure 1*).



Figure 1

2) Feed the small loop through the hole located on the corner of the Pebble (see *Figure 2*). Next, thread the wrist strap through the loop to securely attach the lanyard to the Pebble.



Figure 2

Using the Carrying Case

For added protection, your Pebble includes a convenient carrying case with a belt clip (see *Figure 3*). This helps to protect your Pebble from accidental damage when “on-the-go”. When not using the Pebble, return it to the case for added protection. The carrying case is designed to be attached securely to your belt or shoulder strap.



Figure 3

Turning LED Lighting ON/OFF

Your Pebble has built-in LED lighting to illuminate your reading material. By default, this lighting will turn ON automatically whenever the Pebble is powered on. It is also possible to turn OFF the built-in LED lighting, if desired. This may be useful when magnifying certain objects with a highly reflective surface, such as a glass medicine bottle or glossy photo. Turning the LED lighting off in these instance may improve visibility and help to reduce glare. Use the following procedure to turn off the LED lighting:

1) With the Pebble power turned on, press and HOLD the [MODE] button for approximately 4 seconds. This will turn off the LED lighting (see *Figure 1*).



Figure 1

2) To restore the LED lighting, either press and HOLD the [MODE] button again for ~ 4 seconds, or turn off the power of your Pebble. Each time the Pebble is powered on, it will automatically default to the factory setting with the LED lights illuminated. (see *Figure 1*).

Static/Dynamic LED Modes

There are two modes in which the built-in LED lighting of your Pebble can function, which can be set according to your own preferences:

1) Static LED Mode:

In “static” mode, the built-in LED lighting of your Pebble maintains a constant intensity (brightness) to illuminate your reading material at all times.

2) Dynamic LED Mode:

In “dynamic” mode, the built-in LED lighting of your Pebble will vary in intensity (brightness) according to ambient lighting condition and the contrast of your reading material.

Note: With “dynamic” LED mode, the lighting will provide maximum intensity when viewing dark contrasted surfaces or in low lighting conditions. Conversely, the brightness of the LED will decrease when viewing illuminated surfaces or in bright ambient lighting conditions. Using the “dynamic” LED Light mode may improve image quality depending on the contrast of your reading materials however, will likely reduce battery life.

Use the following procedure to change the LED modes:

1) With the Pebble power turned on, press and HOLD the [SIZE] button for approximately 4 seconds to toggle between either “static” or “dynamic” LED modes (see Figure 1).



Figure 2

Note: The selected “Static” or “Dynamic” LED mode will be retained in memory, even after powering off Pebble.

TROUBLESHOOTING

- **No power to the unit**
 - *Can you power the unit using the included AC adaptor? (pages 10-11)*
 - *Is the power supply properly connected to a surge protector or an AC outlet (mains)? (page 10)*
 - *Are the correct batteries being used and do they need to be charged or replaced? (page 18-20)*
 - *Are the batteries inserted correctly? (page 19)*
- **Video image on LCD is blurry or not clear**
 - *Clean the LCD display and/or camera lens using the included cleaning cloth.*
 - *Adjust the distance of the Pebble from your reading material or adjust the handle angle as needed to improve image quality (focus)*
 - *Try selecting different viewing modes to improve image quality (page 12)*
- **Video image on LCD display is too bright/dark**
 - *The Pebble is designed to be used in moderate lighting conditions, preferably indoors. Bright lighting (or direct sunlight) may produce shadows and/or reduce visibility. Try moving to a more shaded area to improve image quality.*
 - *Adjust the distance of the Pebble from your reading material or adjust the angle of the handle as needed to improve image quality (focus)*
 - *Try selecting different viewing modes to improve image quality (page 12)*
 - *Try adjusting the LCD brightness manually using the procedure described (page 14).*

-
- **Batteries will not charge**
 - *Can you power the unit using the included AC adaptor? (pages 10-11)*
 - *Is the power supply properly connected to a surge protector or AC mains? (page 10)*
 - *Are the correct batteries being used and do they need to be charged or replaced? (page 18-20)*
 - *Are the batteries inserted correctly? (page 19)*
 - *Are you using rechargeable batteries? (page 18)*
 - **Unit turns off automatically**
 - *To conserve power, your Pebble will automatically turn off the LCD after 3 minutes of non-use. This is not a malfunction.*
 - *Are the correct batteries being used and do they need to be charged or replaced? (page 18-20)*
 - **Pebble begins to make a “beeping” sound**

When battery is getting low the unit will start beeping every 13 seconds. The beeping rate will increase every minute until it beeps at a maximum warning rate of once every 3 seconds. Pebble will turn off about 15 minutes from the time it starts beeping. It is recommended to charge the battery when the unit starts beeping. (page 20)
 - **Pebble is displaying “Charge Battery”**

10 minutes after the beeping starts a CHARGE BATTERY warning will show on screen for 4 seconds in intervals of every 15 seconds. It is recommended you charge your Pebble immediately or it will shut off.
 - **Unit becomes warm to the touch**

Your Pebble integrates a camera, LCD and battery charging unit inside a small very package, but is designed to be completely safe and does not pose a risk of fire or damage. It is normal for the Pebble to become warm (sometimes, very warm) after extended periods of use. However, this is completely normal and does not indicate a malfunction.

SPECIFICATIONS

Features:

- Lightweight, portable design
- 200° adjustable handle
- 28 selectable viewing modes
- 3 levels of magnification for Pebble 3.5" (4.7x, 6.3x, 9.3x)
- 4 levels of magnification for Pebble 4.3" (3.9x, 4.9x, 6.7x, 10x)
- Image "Freeze" mode
- Integrated battery charger
- Power save mode (after 3 minutes of non-use)

Display:

- Type: 3.5" or 4.3" diagonal TFT display, 16-bit
- LCD Brightness: 450cd/m² (at full nominal brightness)
- Resolution: 320 x 240 (RGB)
- Viewing Angle: ~75°
- LCD Lifespan: > 30000 hours

Camera: Fixed iris lens, 4.5mm focal length

Physical Dimensions:

- ~ 4.4"L x 3.1"W x 1.4"H (with handle closed for Pebble 3.5")
- ~ 8.7"L x 3.1"W x 1.4"H (with handle fully extended for Pebble 3.5")
- ~ 5.5"L x 3.1"W x 1.4"H (with handle closed for Pebble 4.3")
- ~ 10.2"L x 3.1"W x 1.4"H (with handle fully extended for Pebble 4.3")

Weight: ~ 7.5 oz. for Pebble 3.5"
~ 9 oz. for Pebble 4.3"

Magnification Ranges:

- 4.7x, 6.3x, 9.3x (For Pebble 3.5")
- 3.9x, 4.9x, 6.7x, 10x (For Pebble 4.3")

Warranty: 2 years

Magnification ranges listed above are with the adjustable handle in the closed position. Minimum magnification may be reduced to 2x when the adjustable handle is fully extended.

Environment:

- Operating Temperature : 32° – 122°F (0° – 50°C)
- Storage temperature : -4° – 140°F (-20° – 60°C)

Batteries:

- 2 x 1.25V Nickel-Metal Hydride (NiMH) AA rechargeable batteries, 2500mA or higher (*included in package*)

Note: The batteries recommended for use with Pebble are SONY rechargeable AA NiMH with a rated capacity of 2500mAh or greater. Batteries should always be used in pair, never mixed with any other different batteries.

Note: If batteries are kept in the unit for over one month without use they may need to be recharged in an external charger as Pebble includes a safety mechanism that will not recharge extremely low batteries. It is recommended to remove the batteries if the unit will not be in use for more than a month.

Estimated Charge times (using rechargeable batteries):

~3 hours maximum

Estimated Usage Times (using rechargeable batteries):

(using new, fully charged 2500 mAh NiMH batteries)**

- ~ 1.5 to 2.5 hour battery life depending on screen size (rechargeable / replaceable batteries included)
- ~ 400-500 charge life cycles

Wall adapter:

- UL/CE rated
- Input: 100-240VAC 50/60Hz
- Output: 5VDC, 2.5A max load

Unit:

- Input: 5VDC, 2.5A max load

**To prevent condensation, do not use the unit for 1 hour after transporting the unit from extreme cold to room temperature.*

***All times listed are approximate. Actual Charging and Usage times may vary depending on the life cycle remaining on the batteries, type and current rating of batteries used, LCD brightness setting, LED Mode and other variable factors.*

In the interest of continuous product improvement, specifications and/or minimum system requirements are subject to change without prior notice.

Enhanced Vision Pebble Warranty Policy

Enhanced Vision products are designed to give you the highest quality image, convenient features, ease of use and reliable service. The Pebble has been inspected and tested prior to shipping. Enhanced Vision warrants the Pebble against defects in material and workmanship under normal use for two years from the date of original purchase. Enhanced Vision, at its option, will at no charge either repair the product or replace it during the warranty period. There are no other expressed or implied warranties accompanying this product.

This warranty policy does not cover:

- a) Defects or damage from misuse, use in other than normal and customary manner, accident or neglect;
- b) Defects or damage from improper operation, maintenance, installation, adjustment, alterations or modification;
- c) Defects or damage from spills of food or liquid;
- d) All plastic surfaces and all other externally exposed parts that are scratched or damaged due to normal use;
- e) Damage due to operation of the Pebble with equipment not supplied or designed by Enhanced Vision.
- f) Up to 3 dark or bright pixels that may appear on the Pebble LCD. All products manufactured by Enhanced Vision meet industry standard TFT LCD technology requirements.

-
- You must provide proof of purchase, bearing the date of purchase, in order to receive warranty service.
 - Anyone using this product does so knowingly assuming certain risks, due to the need to utilize vision enhancement devices.

Service Process

In the event that technical support or repair service is needed, please contact your local Enhanced Vision representative or the Enhanced Vision warranty service center. If warranty service is required, please contact Enhanced Vision at (800) 440-9476 Monday through Friday, between 8 a.m. and 5 p.m. Pacific Standard Time (PST) to request a return authorization number.

Warranty repairs will not be accepted without a valid return authorization number.

You may wish to keep the original product packaging in case warranty service is required. The manufacturer cannot provide packaging for warranty repairs.

NOTE: Please completely fill out and send in the enclosed warranty registration card.

OTHER ENHANCED VISION PRODUCTS



DaVinci

DaVinci is a high performance desktop video magnifier (CCTV), featuring HD, text-to-speech (OCR) and a 3-in-1 camera. With HD you will experience high definition color and contrast giving you a beautiful, crystal clear picture and vibrant colors. Experience the joy of reading with our new text-to-speech feature. DaVinci will read any printed text aloud with the push of a button.

Magnification: 24" LCD: 2x (minimum) - to 80x (maximum)



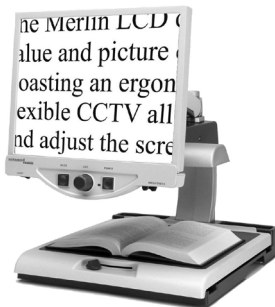
Merlin HD

Merlin HD's camera technology produces an even truer, more natural image.

Easily read books and magazines, read and write letters, manage your financial records, view color photos, do crossword puzzles, and even pursue a favorite hobby.

See for yourself what makes Merlin HD the greatest value and the absolute best picture quality available in desktop video magnification.

Magnification: 22" LCD: 3.2x (minimum) to 64.7x (maximum) 24" LCD: 3.4x (minimum) to 57.8x (maximum)



Merlin LCD

Merlin LCD is a video magnifier that pivots and swivels to the most comfortable viewing position. This product includes all the same features as the Merlin but with a sleek ergonomic design.

Available in 19" , 22" or 24" LCD versions.
Magnification: 2.4X – 85X

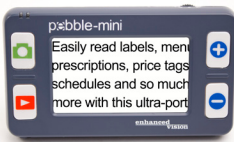




Acrobat LCD

With a built-in 19" LCD, the Acrobat is a 3-in-1 video magnifier ideal for near, distance and self viewing. By rotating the camera, you can read, write, groom, and magnify images at any distance. The Acrobat LCD offers a complete system for those at work, school or home.

Magnification: 2.5X – 65X (19" LCD)



Pebble-mini

Pebble-mini's ultra-compact design makes it the ideal hand-held magnifier whether you're home or on the go. Easily read prescriptions, mail, labels, price tags, menus and so much more. 3.0"LCD screen. Freeze frame and image capture. 28 available viewing modes.

Magnification 2X to 10X



Transformer USB/VGA

Transformer is the most flexible and portable solution for reading, writing and viewing magnified images at any distance. Compatible with popular magnification software and the latest Windows* operating systems, Transformer's unique compact design is perfect for school, work, or home.

Magnification: 3.5X – 14X (digital)





Amigo

Amigo is a truly portable desktop magnifier and is the lightest weight in its class. Optimal viewing is achieved with a tilting 6.5 inch viewing screen. Amigo is battery operated and can be taken anywhere.

Magnification: 3.5X – 14X (digital)



Accessories

Rechargeable batteries (ACC-0080-00)

Additional batteries are available for your Pebble

Carrying Cases

Convenient cases for storage and transport of all Enhanced Vision products.

Power Supplies

Spare power supplies for your Enhanced Vision products.

Contact Information:

(US Office) Phone: (714)465-3400 **Fax:** (714)374-1821

(UK Office) Phone: +44 (0)115 9442317

Fax: +44 (0)115 9440720

(DE Office) Phone: +(49) 06078 911772

Fax: +(49) 06078 911774

Technical Support:

Main Toll Free (800) 440-9476 ext. 3

Local Phone: (714) 465-3400 ext. 3

E-mail: evsupport@enhancedvision.com

NOTES

enhanced vision

The Pebble video magnifier is designed to enlarge and enhance images to improve the lives of people who have low vision. The extent to which Pebble can improve the ability to see images and text depends on a person's individual condition and level of visual impairment. The Pebble is not designed to restore vision, correct eye conditions or halt degenerative vision loss. An eye care professional can best determine the suitability of the Pebble for a patient's specific condition. For more information, please visit www.enhancedvision.com.

www.enhancedvision.com

(800) 440-9476 (US Office, toll free)

(714)465-3400 (US Office)

+44 (0) 115 9442317 (UK Office)

Tel. +49 (0) 6078 911772 (DE Office)

Fax +49 (0) 6078 911774 (DE Office)

Part # MAN-0700-00 Rev. X7
December, 2012

Copyright © 2011 by Enhanced Vision. All rights reserved.
Product specifications subject to change without prior notice.