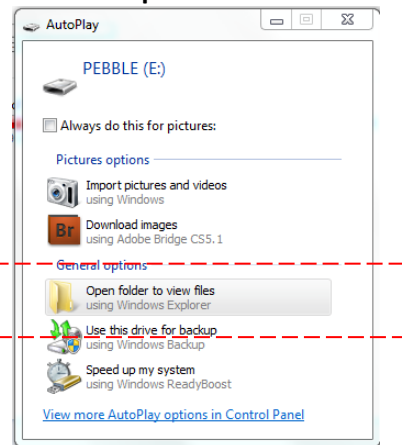


Depending on the date your Pebble-mini was received, there may be some updates to the firmware. Attached to this email is the latest version of the firmware containing all the latest bug fixes and updates for the Pebble-mini.

Follow these directions to update the firmware of your Pebble-mini:

## Downloading and Saving the Firmware to your Pebble Mini

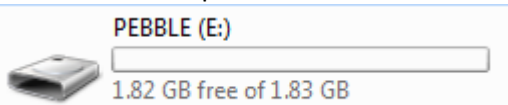
- 1.) In your browser go to:  
<http://www.enhancedvision.com/support/software/pebble-mini-firmware-update.html>  
Right click and save to download the file (**Pebble\_M.elf**) to a location you will remember later such as your desktop.
- 2.) Using the USB Cable provided with your Pebble-mini, plug your unit into an available USB port on your computer.
- 3.) Power on the Pebble-mini if unit is not on already.
- 4.)
  - a. If your computer is set up with the AutoPlay feature on, click on **“Open folder to view files”**.



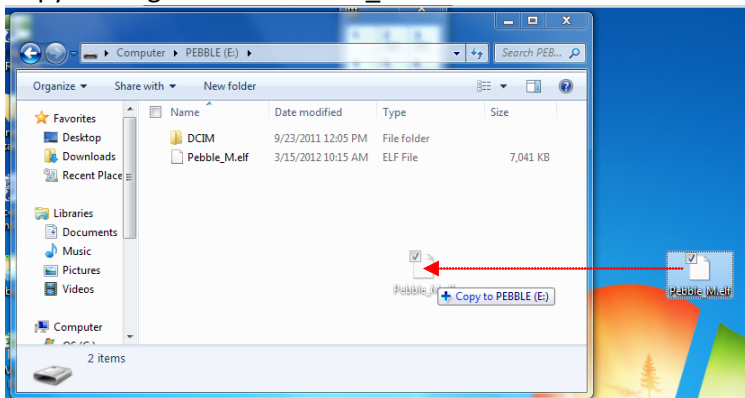
- b. If your PC does not have the AutoPlay feature on, double click the Computer/My Computer Icon on your desktop



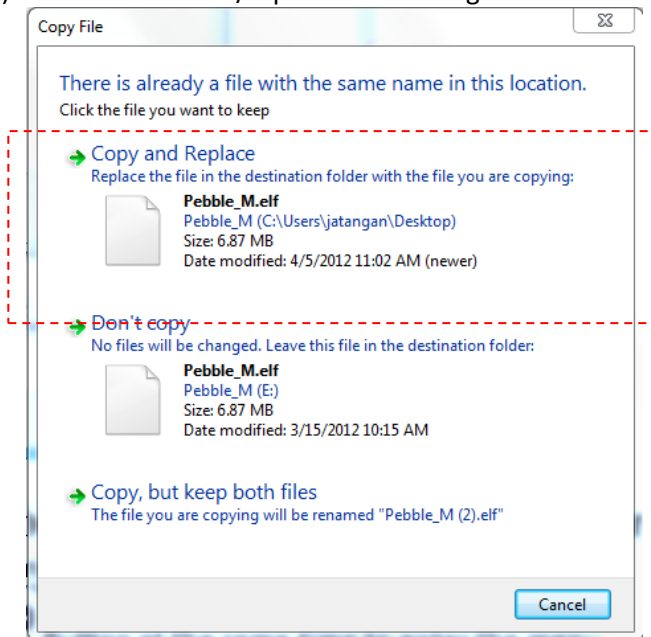
- 5.) Double Click to open the Pebble drive



- 6.) Copy or Drag the new “Pebble\_M.elf” file into the folder





7.) Click to overwrite/replace the existing file





## Updating your Pebble mini with the new Firmware

1.) Unplug the Pebble mini from your PC

2.) Press the  and  Button at the same time to enter the menu

3.) Use the Scroll wheel to scroll down to **"FIRMWARE VERSION"** then Press the  Button

4.) Scroll to the Left with the scroll wheel [] to highlight **"YES"**

5.) Press the  Button to start the upgrade

6.) When the Pebble mini has complete the update it will display

**UPDATE COMPLETE**  
**POWER OFF THE UNIT**

7.) Turn the unit off and back on